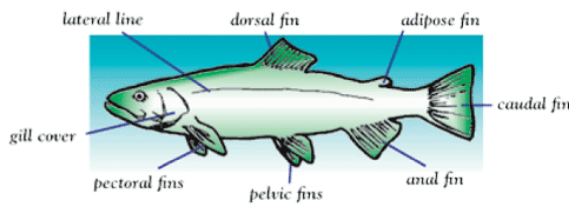
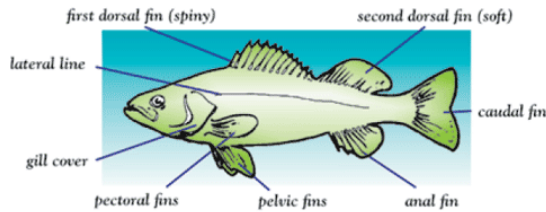


# Common Fish Species of the Susquehanna Watershed

## Fish Anatomy



Soft-Rayed Fish Anatomy (Trout)



Spiny-Rayed Fish Anatomy (Yellow Perch)



## Catfish

### White Catfish

- Light blue-gray/dark slate-gray back and upper sides
- Gray/blue to silvery/yellow-white markings towards belly
- Somewhat forked caudal fin, very broad head



## Perch

### Yellow Perch

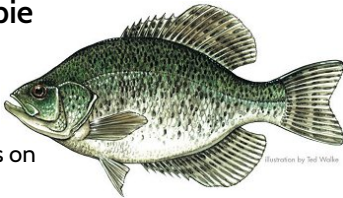
- Long-looking body
- Dark back and side scales form pattern of 6-9 vertical stripes narrowing near belly
- Separated dorsal fins; front dorsal has 13-15 sharp spines, 1-2 on rear dorsal fin, 2 on anal fin



## Sunfish

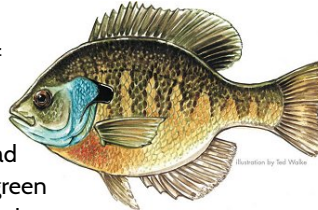
### Black Crappie

- Iridescent
- Scattered dark spots in horizontal rows on sides
- Splotches on dorsal, anal, and caudal fins
- 7-8 spines on dorsal fin



### Bluegill

- 8-10 sets of blue bars on sides
- Sides of head green/blue-green
- Long, pointed pectoral fin



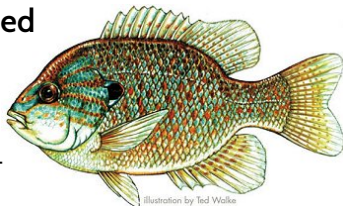
### Largemouth Bass

- Gaping jaw
- Larger, more rotund than smallmouth bass
- Black stripe along side
- Two dorsal fins nearly separate



### Pumpkinseed

- Blue/blue-green lines and olive, orange, or red-orange spots
- Light-blue lines on cheeks and gill covers
- Smaller, more rigid black gill flap with light border and a bright orange-red tip



### Redbreast Sunfish

- Dark vertical bands on sides
- Breast, between gill opening and pelvic fin, may be deep red-orange
- Long gill flap with black spot
- Short and round pectoral fins



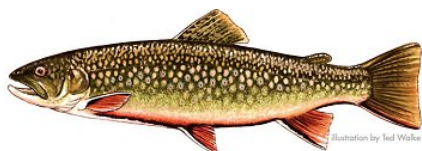
### Smallmouth Bass

- Goldish scales
- Orange-red eyes
- 8-15 darker vertical bars along sides
- Dorsal fin separated by shallow notch



## Trout

### Brook Trout



- Irregular marks/scattered red dots with blue halos on sides, dark streak on belly
- Pectoral, pelvic, and anal fins have white edge followed by black stripe
- Dark blotches on dorsal and caudal fins

### Brown Trout



- Dark spots on sides with pale halos on sides and some red-orange or yellow spots
- Fins clear, yellow-brown, unmarked

### Rainbow Trout



- Pink or red stripe
- Rows of small, dark spots on caudal fin and some on head, sides, and dorsal and adipose fins